



MONTHLY MEMBERSHIP PROGRESS REPORT

District 27 A1

Results as of: 5/31/2015

GMT: Judy Hankom

LOCATION WISCONSIN

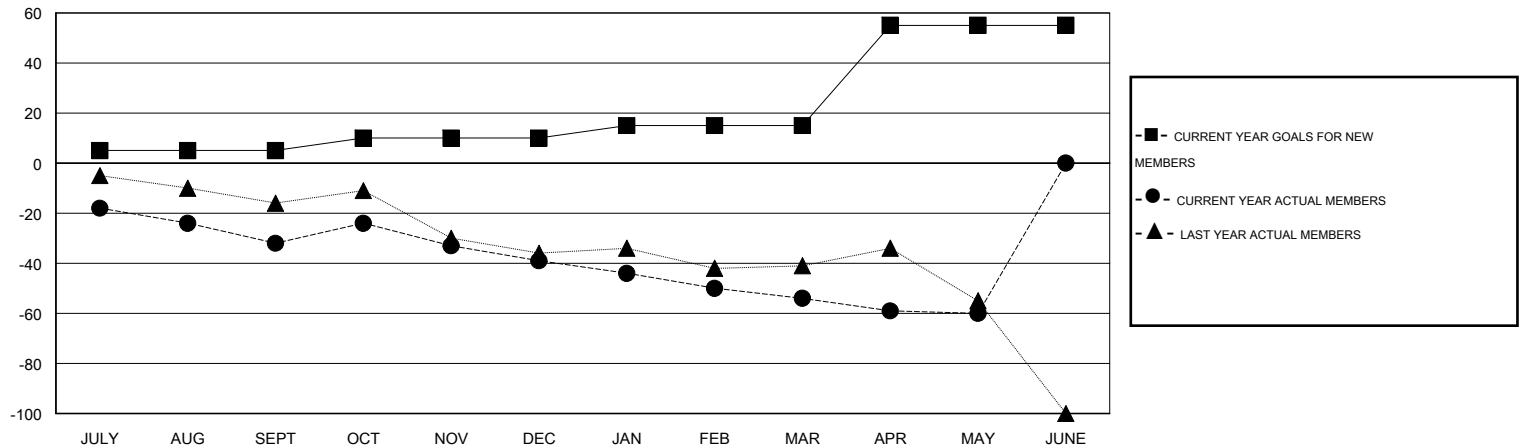
GMT CA 1

Clubs					Members				
RESULTS FOR 2014-2015					RESULTS FOR 2014-2015				
QUARTER	NEW CLUB GOAL	NEW CLUBS	DROPPED CLUBS	NET GAIN/LOSS	QUARTER	NEW MEMBER GOAL	CHARTER AND NEW MEMBERS ADDED	DROPPED MEMBERS	NET GAIN/LOSS
JULY/AUG/SEPT	0	0	1	-1	JULY/AUG/SEPT	5	29	61	-32
OCT/NOV/DEC	0	0	0	0	OCT/NOV/DEC	5	29	36	-7
JAN/FEB/MAR	0	0	0	0	JAN/FEB/MAR	5	34	49	-15
APR/MAY/JUNE	1	0	0	0	APR/MAY/JUNE	40	22	28	-6

GOALS AND ACTUAL NEW CLUBS CUMULATIVE



GOALS AND ACTUAL MEMBERS CUMULATIVE



DROPPED CLUBS: 1	29 CLUBS OF 51 ADDED 1 OR MORE NEW MEMBERS	GENDER DISTRIBUTION
		MALE 1,441 (83.29%)
		FEMALE 289 (16.71%)
DROPPED MEMBERS	CLICK HERE FOR HEALTH ASSESSMENT DATA	FAMILY UNIT MEMBERS 226
DECEASED 25		HEAD OF HOUSEHOLD 106
CLUB CANCELLED 0		NON-HEAD OF HOUSEHOLD 120
OTHER 149		
TOTAL 174		